

Applications



General Aviation

Date - UTC - Location - Altitude - Course - Speed - G-forces
RPM - CHT - WT/OT - EGT - OP - OUT



Logistics and Transportation

Date - Location - Speed - Fuel consumption
Standing time - Tracking - Theft alarm



Water

Date - Location - Level - Course - Speed
Wind - Water Detector
Alarm: Change of location - Fire - Gas - Theft



Elektronics Management

Remote monitoring - Remote control - Reporting
Alerts with analysing of:
Air conditioning - Heating systems - Pump systems -
Lift systems - Solar systems - Alarm systems

The technological and logistical processes are constantly evaluating data to control information effectively, decreasing risk and improving safety.

The data records must be objective in cases of damage, ensuring a reliable basis for causal research and liability investigations.

From the original KAPI box, a universal base unit was developed and modified for general aviation, road and water. Aircraft and navigation instruments are integrated. The processed data can be imported into different processing systems, from there managed and visualized.

A Logbooks available.
Datatransfer via GPRS/GSM (M2M) automatic connection.
Kapi received several awards for this product act. "Brandenburg Innovation Award".



Example system



Am Flugplatz 1, D-16227 Eberswalde

+49 3334 5264 183

+49 3334 5264 185

+49 163 37 09 604

info@kapi-electronics.de

www.kapi-electronics.de

CONTROLSYSTEMS

with innovativem sensor technology



Aviation

Maritime

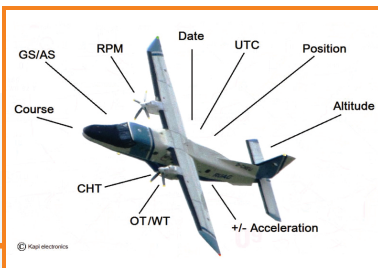
Road transport

Industry



www.kapi-electronics.de

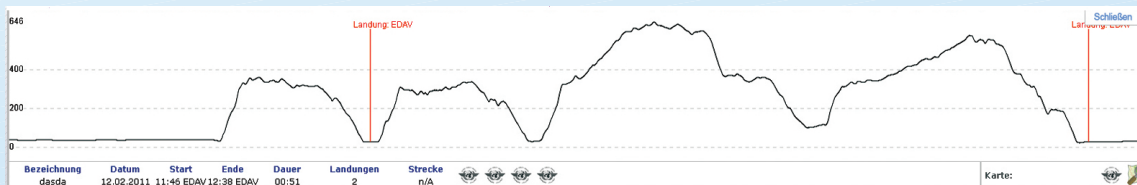
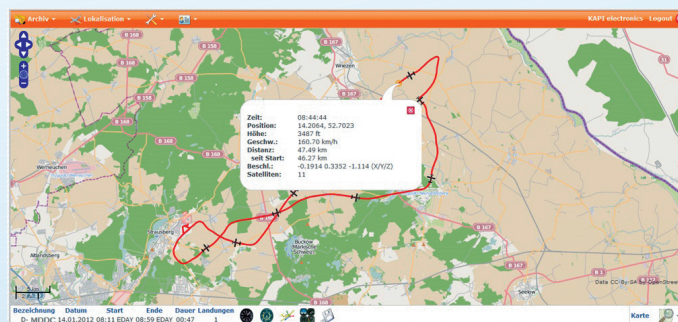
The 100x60x30 mm sized device offers an incorruptible service in the interest of safety. KAPI air: The orange "black box" for general aviation.



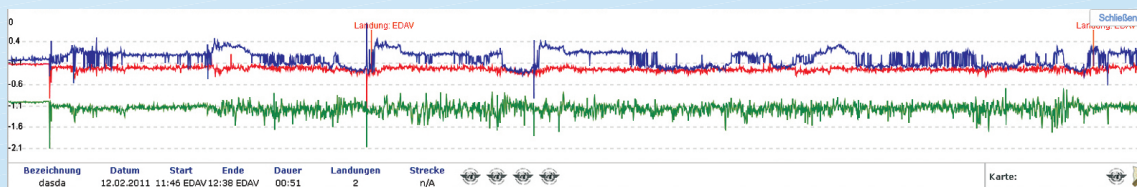
The incorruptible and objective evidence of flight movements helps in the identification of damages and accidents. It also increases the quality of flight training. Time and costs are saved through the automatic data transfer from KAPI Air to the commercial management software.

KAPI air provides charter and flight schools a powerful, 'yet easy to use tool for recording and actively monitoring flights.

The evaluations are clearly visualized



altitude



g-forces



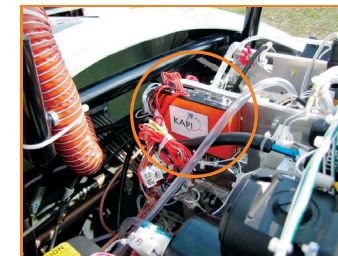
speed

- date, UTC
- position
- course
- altitude
- speed
- g-forces
- CHT
- RPM
- WT
- OT
- EGT
- OP

and others

Route of fly in the map

Because of its small dimensions, KAPI air can be installed in any cockpit, and suitable for mobile use.



Fixed installation



Mobile installation

Tracking and Monitoring

- Permanent tracking of all aircrafts
- Notification for exceeding limits
- Free parameters at the maxim
- Complete recording and display of flight routes
- Freely configurable Geo-Fencing
- Alarm functions
- Remote switching

Technology

- Latest GPS Technology
- Data transmission via GPRS
- Data storage in the absence of radio network
- Remote firmware update possible
- Low power consumption (sleep mode 1mA)
- Active Power Management
- Mobile or fixed installation
- Simple to install

Software

- Compatible to all operating systems
- Visualization of flight records on HTML5 enabled browser
- Notifications via e-mail or SMS
- Easy data exportation for processing
- Use of KAPI software on servers.
- No additional costs!